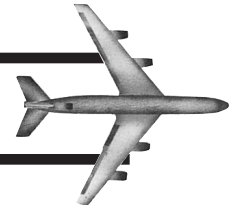


# The Anderson Family BATTERY CONNECTORS



## Battery Connectors - CAT. NOS. R121, R125, 4657B



### Corkscrew plugs and receptacles lock into compact, rugged connections

#### The connector

Corkscrew locking plugs and receptacles provide compact, weathertight connections for quick indoor or outdoor battery charging and numerous other electric vehicle, industrial and aircraft applications.

For maximum conductivity with minimum corrosion, all contacts are silverplated copper. Even after salt-spray exposure electrical resistance stays minimal.

#### The plug

Plug mechanisms are encased in a durable Hypalon insulation housing. Stainless steel garter springs reinforce the socket-type contacts to increase mating pressure and make each connection equally reliable. Intergrally designed gaskets seal the mated connector.

The plug models differ primarily by means of termination and current rating. Catalog number R121 is a convenient no crimp no solder setscrew termination. Catalog number R125 provides the precise fit and rugged connection of a conical lug termination, which is retained in the plug with an allen-type screw.

A screw-lock mates the connector tightly enough to withstand severe vibration and physical shocks. It is operated by a twist handle which positively connects and disconnects the plug. The handle also indicates the state of the connection by its position.

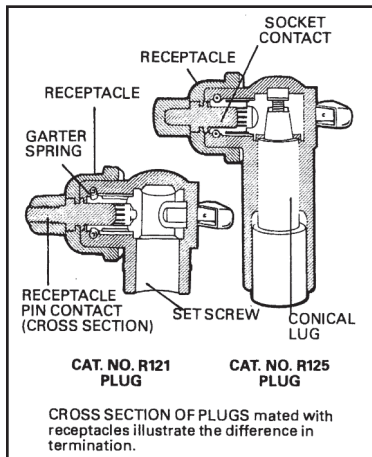
#### The receptacle

The receptacle is flanged for surface mounting. Pin-style contacts are molded into the glass-filled thermoset plastic housing. Hardware is plated to resist corrosion.

#### Applications

The corkscrew is a versatile, high performance connector, that may be used for weatherproof battery charger and intercomponent connections in electric vehicles; as a stand-by power connector in computer systems; or as a ground power connector in marine, air and rail transport. It is recommended for other similar applications, or wherever hydraulic fluids, oils, acids and other such potentially destructive elements could shorten the life of another connector.

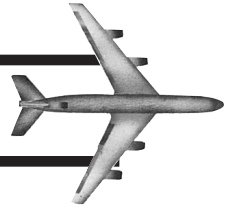
data table



	PLUG	PLUG	PLUG RECEPTACLE
CATALOG NUMBER	R121	R125	4657
AMPERES, CONTINUOUS	250	300	300
VOLTS	125	600	600
CONNECT-DISCONNECTS	no load at least 5000 time (all) load for disconnect use only (all)		
AWG CABLE SIZES	6-3/0	10-4/0	10-4/0
MAXIMUM CABLE O.D.	3/4"	1"	
CABLE CONNECTION	set screw	conical lug*	threaded pin
CONTACT TYPE	socket	socket	
CONTACT MATERIAL	silverplated copper (all)		
CONTACT RESISTANCE	approximately 75 micro-ohms maximum after 100-hr. salt spray test		
CONTACT MATING FORCE	<12 inch-pound torque (all)		
AUXILIARY CONTACT	available - consult factory		
TEMP. RISE ABOVE AMBIENT	<30°C with largest cable rated-continuous duty (all)		
ENVIRONMENTAL RESTRICTIONS			
AMBIENT OPERATING TEMP.	-40°C to + 71°C (all)		
WEATHERPROOF	yes†	yes†	yes†
OTHER TESTING	vibration, temperature, shock, dielectric strength, fungus, salt spray, humidity, hydraulic fluids, acid, alkali, lubrication oil		
HOUSING COLOR	black	black	black

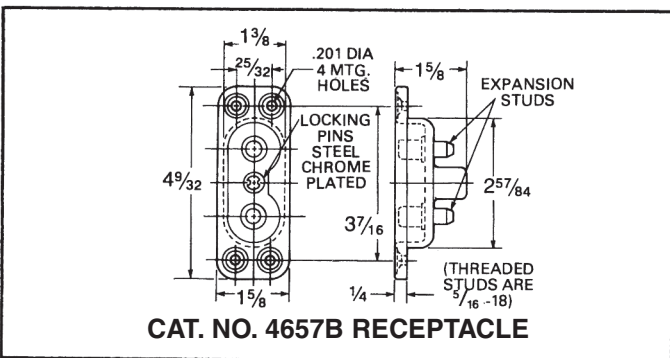
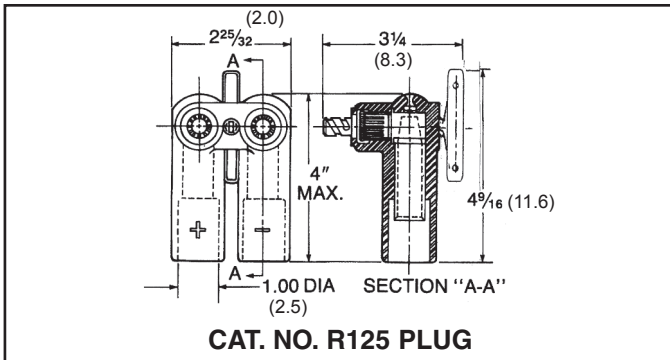
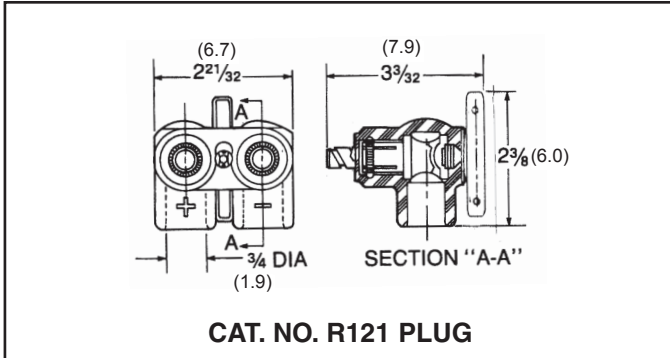
\*crimp or solder contact \*\* shrink tubing over connector sleeve-to-cable joint and potted set-screw holes required

# BATTERY CONNECTORS







## Battery Connectors - Plugs and Receptacles

### DIMENSIONS



### ORDERING INFORMATION

set screw termination				
	AWG Size **	Metric mm	Catalog Number	
		#6-3/0	(85)	R121
lug termination (lugs included)				
	AWG Size **	MS 1411-	Metric mm	Catalog Number
	10	-2	(5)	R125G1
	8	-3	(8)	R125G2
	6	-4	(13)	R125G3
	5-4	-5	(17-21)	R125G4
	3-2	-6	(27-34)	R125G5
	1	-7	(42)	R125G6
	1/0	-8	(53)	R125G7
	2/0	-9	(67)	R125G8
	3/0	-10	(85)	R125G9
4/0	-11	(107)	R125G10	
lug sets (replacement)				
	AWG Size **	METRIC mm	Catalog Number	
	8-10	(8-5)	970	
	12-10	(3-5)	971	
	8	(8)	972	
	6	(13)	973	
	5-4	(17-21)	974	
	3-2	(27-34)	975	
	1	(42)	976	
	1/0	(53)	977	
	2/0	(67)	978	
3/0	(85)	979		
4/0	(107)	980		
Two lugs per set, with hardware				
ordering information Receptacle				
	Description***			Catalog Number
	Black with threaded studs _____			4657B

SUGGESTED CRIMP TOOLS FOR R125			
AWG Size	Tool	Nest	Indentor
6		A6CD	Y34PL-1
5-4	Burndy	A2CD	Y34PLA
3-2	Y34A	A1CD	Y34PLA
1	Hypress	A25D	Y34PA
1/0	or	A26D	Y34PA
2/0	equivalent	A27D	Y34PA
3/0		A28D	Y34PR-5
4/0		A29D	Y34PR-5

The cat. no. R125 Plug is covered by the following patents:  
U.S. Patent 2,917,722  
Canadian Patent 612,047

\*\* Soldering is recommended for cable sizes 10 through 8 AWG. For Cable sizes 6 through 4/0 AWG, see suggested crimping tool.

# Electric Vehicle Charging Connectors

## Charging Power Plugs and Cable Assemblies

### Benefits:

- Silver-plated contacts for charging up to 450A
- Full line of integral molded plugs and receptacles
- Designed for low insertion force
- Multiple options include sensors and control mechanisms
- Excellent resistance to moisture/chemicals and severe wear and tear



### Battery Connectors

- Versatile, secure, high current corkscrew connector suitable for:
  - Weatherproof battery charger and inter-component connections
  - Stand-by power connector in computer systems
  - Ground power connector in marine, air and rail transport
  - Wherever hydraulic fluids, oils, acids and other such potentially destructive elements could shorten the connector life

### ORDER INFORMATION:

Battery Connector	R121 or R125G#	# - Cable Identifier
Battery Receptacle	4657BX	



### Fast Charge Power Cables and Receptacles

- High current 6 and 9 Pin plugs and receptacles
- Multiple cable configurations
- Capable of 80VDC/150A and 400VDC/450A



### ORDER INFORMATION:

Fast Chrg Cable	R270 Gxx E - M	6 Pin	xx – Cable Config
Fast Chrg Cable	R80 G103	9 Pin	
Receptacle w/ Shield	4630B	6 Pin	
Receptacle w/ Shield	4635B	9 Pin	

**ANDERSON AIRMOTIVE PRODUCTS Co., Inc.**

994 Jefferson Street, Fall River, MA 02721 • Tel (508) 646-0950 / Fax (508) 646-0966

E-mail : [sales@andersonairmotive.com](mailto:sales@andersonairmotive.com) • [www.andersonairmotive.com](http://www.andersonairmotive.com)