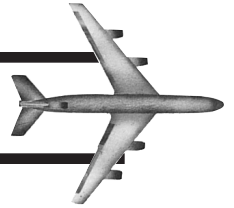

THE ANDERSON FAMILY RECEPTACLES

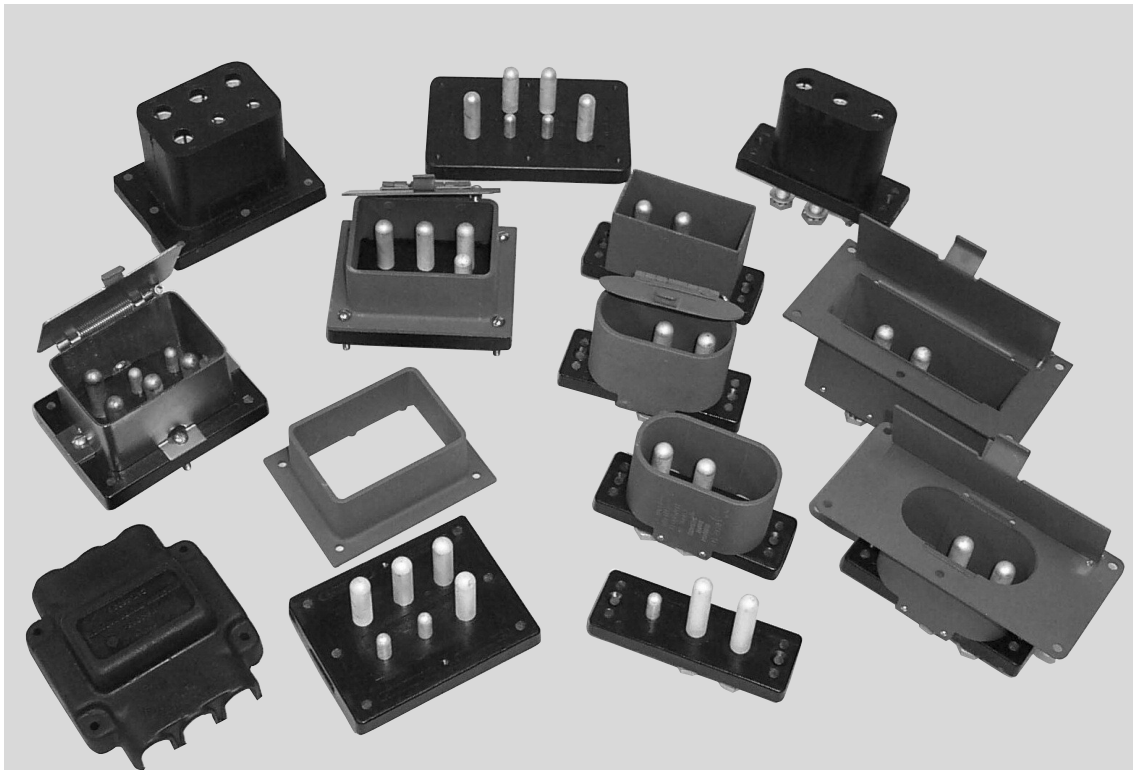


Ground Power Receptacles are located on the aircraft or other devices and receive the power input from a ground source to recharge and operate electrical accessories. Anderson offers the largest selection of receptacles ranging from 28V DC to 270V DC and 110V AC to 400V AC accommodating all your power needs. Varieties include male and female designs.

Anderson Airmotive DC and AC receptacles are manufactured to specification MIL-C-81790 and are listed on the Qualified Products List. Bases are molded of glass reinforced material for low moisture absorption and high strength. The copper power and brass control contacts are machined and silverplated to MS

tolerances.

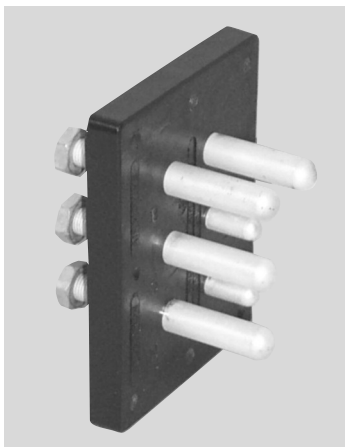
The shield, when applicable, is of anodized aluminum to guide plug insertion and guard against misalignment. Studs and contact nuts for lug connections are located at the rear of the receptacle.



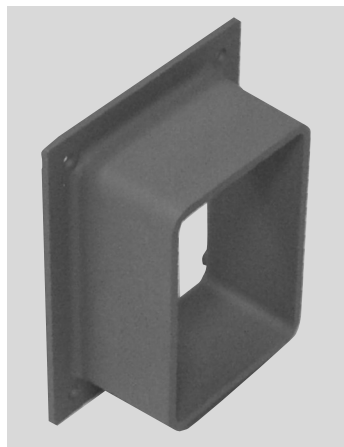
Receptacle Performance to QPL MIL-C-81790 (AS81790)

Dielectric Withstand	2500VRMS WITH< 1 milli-amp leakage
Current Rating - Power Contacts	450A continuous (> than 1 hour) 1500A for 1 minute
Current Rating - Control Contacts	35A continuous auxiliary
Flexural Strength	3500 lbs (1590 Kg)
Thermal Shock	-65° to +200°C
Impact Strength - Power Contacts	Withstands impact of 10 lb weight (4.5KG) dropped from 24 inches (60 cm)
Impact Strength - Control Contacts	Withstands impact of 10 lb weight (4.5KG) dropped from 12 inches (30 cm)

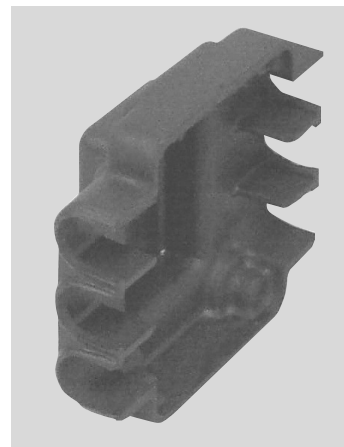
Ground Power RECEPTACLES (6-POLE) 115/200V AC 400Hz



**Receptacle MS90302-3
4627B**



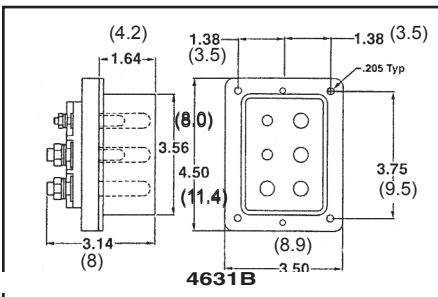
**Shield MS17845-1
4654B**



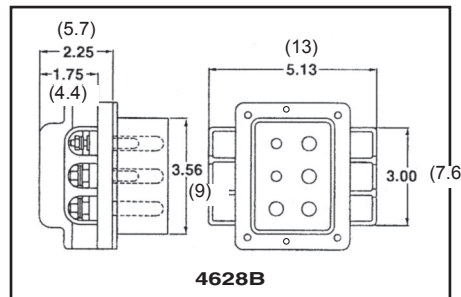
**Rear Cover MS3505-1
4633B**



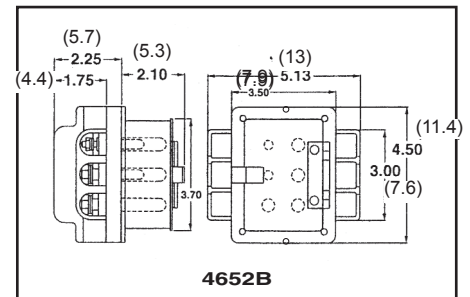
Snap Cover 4652G2B



**Receptacle with Shield
4631B**



**Receptacle with Shield
and Rear Cover
4628B**



**Receptacle with Rear Cover
and Snap Cover
4652B**

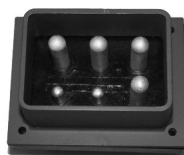
400 Hz Receptacles are designed to meet specifications for Connector Style 3A as detailed in ISO461/1 AND ISO461/2, and US Military Specification MIL-C-81790 (A) and are listed on Qualified Product List (QPL)

Description	Anderson Catalog Number	Government Reference Number	Mating Plug & Cable Assemblies
Receptacle Only	4627B	MS90362-3	Series R67 Plug (MS25486) and Cable Assembly MS90328
Receptacle w/Rear Cover and Shield	4628B	MS90362-4	
Receptacle w/Shield	4631B	MS90362-1	
Rear Cover Only	4633B	MS3505-1	Series R90, R91 _____ Series R112
Shield Only	4654B	MS17845-1	
Receptacle w/Rear Cover, Shield and Hinged Snap Front Cover	4652B	_____	
Hinged Snap Cover Steel Shield	4652G4	_____	
Hinged Snap Cover Aluminum Shield	4652G2B	_____	
Female Receptacle	4667B	_____	
Snap Cover and Shield (steel) Female Receptacle	4652G3B	_____	

Power Terminal Studs have 3/8 - 24 thread. Control terminal studs have 10-32 N.F. thread. All dimensions are in inches and centimeters for reference only; they should not be used for layout work. Specific details will be furnished on request.



4628B



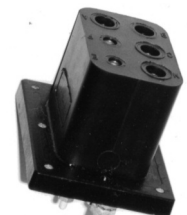
4631B



4652G2



4652G3B



4667B